



# 2019 IOD North American Invitational

June 28 – 29, 2019


Organized by

The Nantucket International One Design Fleet Association (NIODFA)  
and the Nantucket Yacht Club (NYC)


## SAILING INSTRUCTIONS

### 1 RULES

- 1.1 The regatta will be governed by the *rules* as defined in *The Racing Rules of Sailing*, including the IOD Class Rules.
- 1.2 No national prescriptions will apply, except the US Sailing prescription to RRS 67, printed in the NoR.

- 1.3 When flag Y  is displayed, prior to the warning signal, from the race committee signal vessel:
- (a) Spinnakers shall not be used for that race.
  - (b) PFDs (lifejackets) shall be worn by all competitors.
  - (c) RRS 44.3 Scoring Penalty, will be in effect, instead of RRS 44.1 and 44.2 (turns).

The provisions of this SI may be rescinded by display of

flag O , with sound signals, at a mark of the course.

- 1.4 RRS 62.1 is changed by adding:
- (e) physical damage not falling within RRS 62.1(b) which was due to defective supplied equipment and which a reasonably competent crew would not have been able to avoid or promptly repair.

### 2 NOTICES TO COMPETITORS

- 2.1 Notices to competitors will be posted on the official notice board located in the NYC clubhouse ballroom.
- 2.2 Boat rotations will be posted.
- 2.3 The race committee will use VHF channel 73 to communicate with competitors.

### 3 CHANGES TO SAILING INSTRUCTIONS

- 3.1 Any change to the Sailing Instructions will be posted by 0830 on the day it will take effect, or within 30 minutes of the termination of any competitors' meeting, except that any change to the schedule of races will be posted by 2000 on the day before it will take effect.

### 4 SIGNALS MADE ASHORE

- 4.1 Signals made ashore will be displayed from the flagpole at the NYC.
- 4.2 When flag AP is displayed ashore, '1 minute' is changed to 'not less than 60 minutes' in the race signal AP.
- 4.3 When flag AP is displayed ashore, boats shall remain on moorings.

### 5 SCHEDULE OF RACES

- 5.1 Seven races are scheduled.
- 5.2 No more than four races will be sailed on any one day.
- 5.3 Friday June 28
- 0830 Competitors Meeting at the NYC, with boat and spinnaker draw
- 1030 Practice starts
- 1100 Earliest time for first race warning signal
- Saturday June 29
- 1030 First warning signal
- 5.4 To alert boats that a race will begin soon, the orange starting line flag will be displayed with one sound signal at least five minutes before a warning signal is made.

### 6 CLASS FLAG

The class flag will be:



### 7 RACING AREAS

- 7.1 Attachment 1 shows the location of racing areas.
- 7.2 The initial racing area will be posted on the official notice board, announced at the competitor's meeting and announced over VHF periodically before the boats exit the channel.

### 8 COURSES

The diagrams in Attachment 2 show the courses, including the approximate angles between legs, the order in which marks are to be passed and the side on

which each mark is to be left.

## **9 MARKS**

- 9.1 Marks 1, 1a and 2P and 2S will be orange inflatable tetrahedrons.
- 9.2 The starting and finishing marks will be a yellow inflatable tetrahedron and a race committee vessel.

## **10 THE START**

- 10.1 Before the warning signal, the race committee will display the approximate compass bearing to the first mark, the approximate distance to the first mark, and the course identifying number. This information will also be broadcast over VHF.
- 10.2 Five short sound signals will be made ten seconds before the warning signal.
- 10.3 The starting line will be between a staff displaying an orange flag on the signal vessel at the starboard end and the course side of the port-end starting mark.
- 10.4 Boats may not start more than 10 minutes after the starting signal.
- 10.5 The race committee will attempt to hail the sail numbers of OCS boats after the starting signal, over VHF. The failure of the race committee to hail, or of any boat to hear the hail and the order of such hails will not be considered an improper action or omission of the race committee under RRS 62.1(a).

## **11 CHANGE OF THE NEXT LEG OF THE COURSE**

To change the next leg of the course, the race committee will move the original mark (or the finishing line) to a new position and signal all boats in accordance with RRS 33 before they begin the leg. The next mark need not be in position at that time.

## **12 THE FINISH**

The finish line will be between a staff with an orange flag on a race committee vessel and the course side of a nearby mark.

## **13 PENALTY SYSTEM**

See SI 1.3

## **14 TIME LIMIT**

The time limit for the first boat to sail the course and finish is 120 minutes.

## **15 PROTESTS AND REQUEST FOR REDRESS**

- 15.1 Protest forms are available at the Protest Desk located in or near the Ballroom at the NYC.
- 15.2 Protests shall be delivered to the Protest Desk within 60 minutes after the race committee finish vessel docks. The vessel docking time and a list of protests received will be posted on the notice board.
- 15.3 Notices will be posted no later than 30 minutes after the protest time limit to inform competitors of

hearings in which they are parties or names as witnesses. Hearings will be held as soon as possible after racing each day in the NYC Sail Room.

- 15.4 Notices of protests by the race committee, technical committee or protest committee will be posted to inform boats under RRS 61.1(b).
- 15.5 On the last day of racing, a request for re-opening a hearing, or a request for redress based on a protest committee decision, shall be delivered
  - (a) within the protest time limit if the requesting party was informed of the decision on the previous day;
  - (b) no later than 30 minutes after the requesting party was informed of the decision on that day.This changes RRS 62.2 and 66.

## **16 SCORING**

- 16.1 Race scores will accrue to a team, not a boat. This changes RRS A2.
- 16.2 When fewer than five races have been completed, a team's series score will be the total of her race scores.
- 16.3 When five or more races have been completed, one worst score will be excluded, as permitted in rule 90.3(b), from a team's series score.
- 16.4 Three races are required to be completed to constitute a series.

## **17 BOATS AND EQUIPMENT**

- 17.1 The boats shall not be modified in any way except as follows:
  - (a) A compass may be tied or taped to the hull or spars.
  - (b) Wind indicators may be tied or taped anywhere on the boat.
  - (c) Hulls (above the waterline only), decks, sails and equipment may be cleaned only with non-abrasive materials.
  - (d) Adhesive tape may be used anywhere above the waterline except on brightwork.
  - (e) All fittings or equipment designed to be adjusted in accordance with Class Rules may be adjusted within the limits provided, except that shrouds, fore-stay and mast chocks shall not be adjusted.
- 17.2 Prohibited actions:
  - (a) The shrouds, above the turnbuckles (bottle screws), may not be used to project crew weight.
  - (b) No holes may be made in sailcloth to permit the attachment of telltales.
  - (c) Cross winching of sheets.
  - (d) Competitors may not change purchase to any of the boat's running rigging.
  - (e) No marks should be made on the boats with pencils, markers or grease pencils, except that they shall be completely washable, leaving no trace of their use. Only non-residue tape may be

used.

(f) The hulls may not be scrubbed, washed, wet-sanded or otherwise treated below the waterline.

17.3 Spinnakers will be allocated to each team in accordance with a draw to be held in conjunction with the draw for boats at the competitors meeting. Spinnakers will stay with each team throughout the regatta.

17.4 All equipment provided with the boat shall be on the boat when racing.

17.5 The penalty for not complying with the above instructions will be disqualification from all races from which the instruction was broken.

## **18 SAFETY REGULATIONS**

18.1 All boats are requested to check-in with the race committee before the start of the first race each day by sailing past the signal boat on starboard tack and hailing their sail number, and receiving confirmation from the race committee.

18.2 A boat that leaves the course area before the end of the last race shall notify the race committee as soon as possible.

18.3 Boats shall not cut between the white buoy and the visible end of the west jetty.

## **19 DAMAGES, REPORTS, AND PENALTIES**

19.1 The questions of damages arising from a breach of any rule shall be governed by the US Sailing prescription to RRS 67. Damage to boats while not racing shall be the responsibility of the at-fault skipper. The at-fault skipper must pay damages determined by NIODFA to NIODFA pending any appeal of a decision of the protest committee.

19.2 If no protest is filed because the at-fault boat retired or accepted a penalty pursuant to the rules, they shall be held responsible for any damage from an incident. If damage occurs as a result of an incident between boats, and neither boat delivers a valid protest, then the boats involved in the incident shall be held equally responsible.

19.3 If damage that caused a boat to be withdrawn from the rotation has been attributed to a team by the protest committee, then that team shall not compete in any further races until the damaged boat or a replacement boat becomes available. That team will be scored DNC for all missed races.

19.4 If the damage that caused a boat to be withdrawn from the rotation was not completely and accurately reported on a damage report, the last team to use the damaged boat shall not compete in any further races until the damaged boat or a replacement boat becomes available. That team will be scored DNC for

all missed races.

19.5 Damage Report forms are available at the Protest Desk. After each day's sailing, each skipper shall complete an accurate damage report, including all contact, however minor, and return it, by the end of protest time, to the Protest Desk. Failure to meet this requirement may result in a penalty at the discretion of the protest committee, up to and including disqualification from one or more races. This changes RRS 63.1.

## **20 BREAKDOWNS**

20.1 A boat requesting redress for a breakdown before or after a race shall drop its jib, move away from other boats and contact the race committee immediately.

20.2 If the breakdown occurs during a race, the boat must finish the race if possible, provided that further damage will not likely be incurred.

20.3 The boat shall return to the starting area and stand by the committee vessel while executing her repairs. When repairs are completed the skipper shall then verbally advise the PRO that she is ready to race.

20.4 If a boat incurs a breakdown during a race through no fault of the team sailing her, that team may file for redress in accordance with SI 1.5 and RRS 62.

## **21 RADIO COMMUNICATIONS**

Except in an emergency, a boat that is racing shall neither make nor receive voice or data transmissions not available to all boats.

## **22 PRIZES**

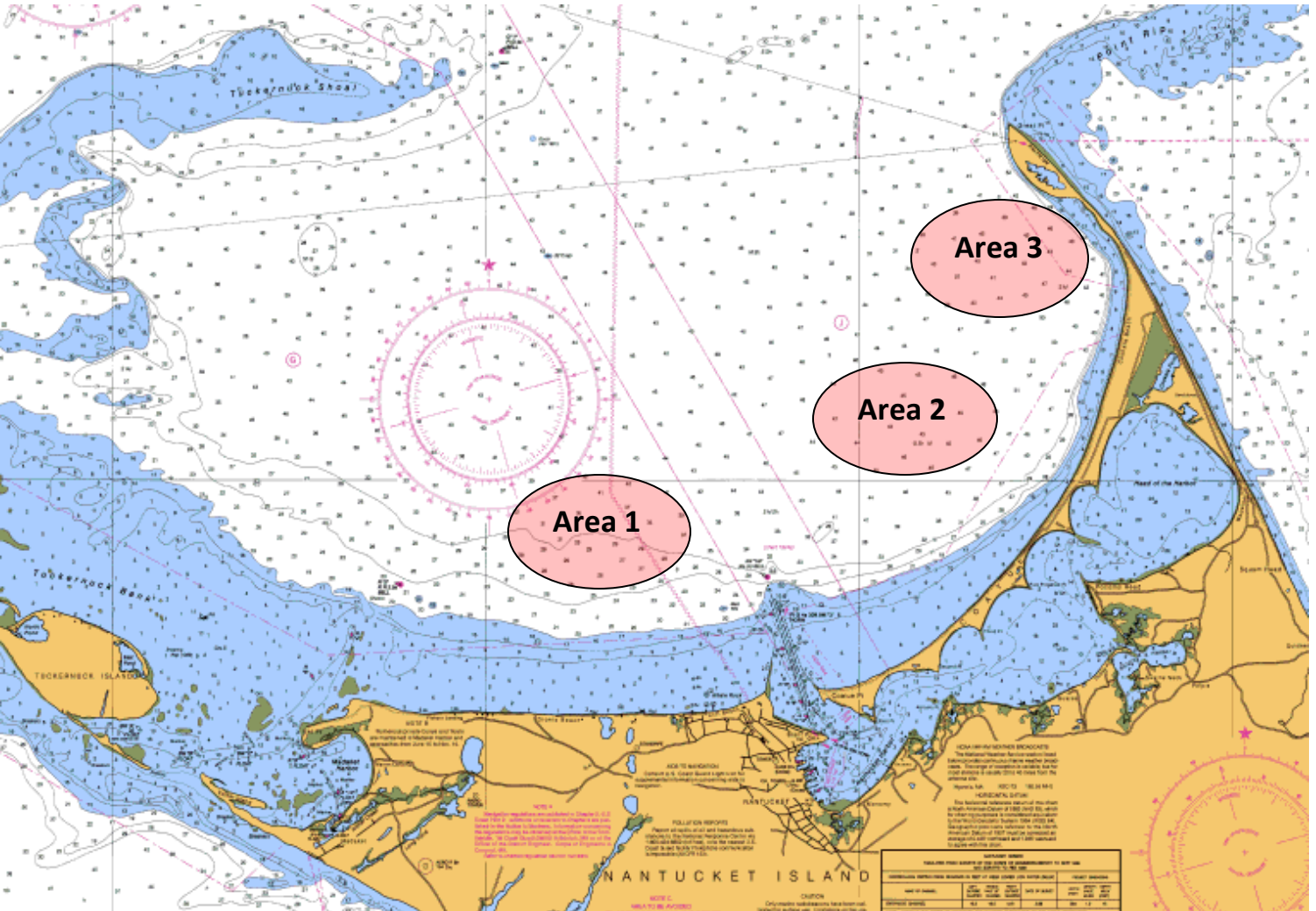
22.1 Daily awards will be presented each day.

22.2 Series trophies, including the Officers' Perpetual Trophy, will be presented at the closing awards ceremony.

## **23 DISCLAIMER OF LIABILITY**

Sailing is an activity that has an inherent risk of damage and injury. Competitors in this event are participating entirely at their own risk. See RRS 4, Decision to Race. The race organizers (the NIODFA, Nantucket Yacht Club, Race Committee, Protest Committee Technical Committee, or any other organization or official) will not be responsible for damage to any boat or other property or the injury to any person sustained as a result of participation in this regatta. By participating in this regatta, each competitor (skippers, crews, and support persons) agrees to release the race organizers from any and all liability associated with such competitor's participation in this regatta to the fullest extent permitted by law.

# Attachment 1 – Racing Areas



## Attachment 2 – Courses

Course 2	Course 3	Course 4	Course 5
<p>Start, 1 (port), 1a (port), between 2S and 2P, 1(port), 1a (port), between 2S and 2P, finish</p>	<p>Start, 1 (port) 1a (port), between 2S and 2P, finish at 1</p>	<p>Start, 1 (port), 1a (port), between 2S and 2P, 1(port), 1a (port), finish</p>	<p>Start, 1 (port), 1a (port), between 2S and 2P, 1 (port), 1a (port), between 2S and 2P, finish at 1</p>
<p>In course 2 the Start/Finish line is not restricted</p>			
<p>If only one leeward mark is present, it shall be rounded to port.</p>			